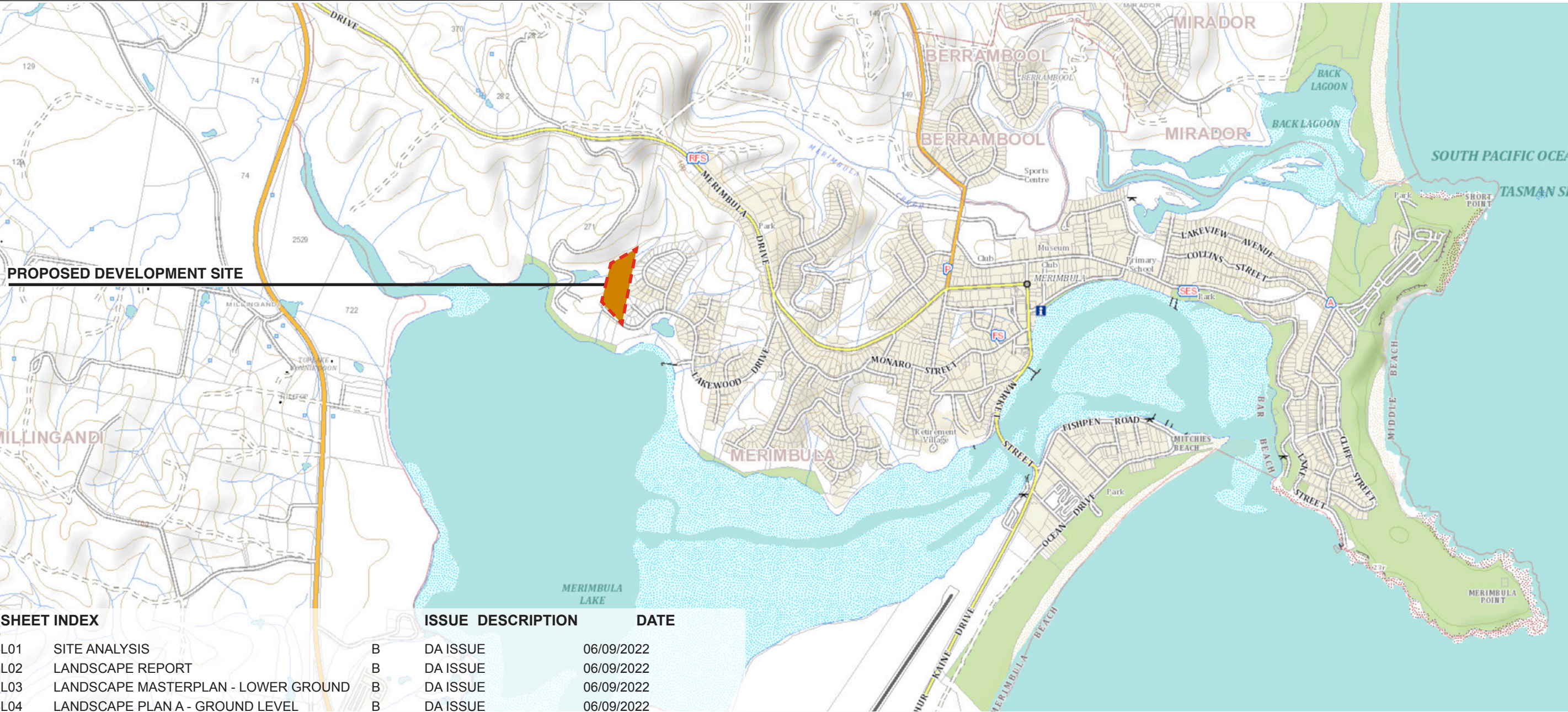


Lot 3 Lakewood Drive, MERIMBULA

Lot 602 / DP1277714

Development Application Landscape Documentation



SHEET INDEX

L01	SITE ANALYSIS
L02	LANDSCAPE REPORT
L03	LANDSCAPE MASTERPLAN - LOWER GROUND
L04	LANDSCAPE PLAN A - GROUND LEVEL
L05	LANDSCAPE PLAN B - GROUND LEVEL
L06	LANDSCAPE PLAN C - GROUND LEVEL
L07	PLANT SCHEDULE - GROUND LEVEL
L08	LANDSCAPE PLAN A - FIRST LEVEL
L09	PLANT SCHEDULE - FIRST LEVEL
L10	LANDSCAPE PLAN - DETENTION BASIN
L11	LANDSCAPE PLAN - GREEN WALL

ISSUE DESCRIPTION

DATE

B	DA ISSUE	06/09/2022
B	DA ISSUE	06/09/2022
B	DA ISSUE	06/09/2022
B	DA ISSUE	06/09/2022
B	DA ISSUE	06/09/2022
B	DA ISSUE	06/09/2022
B	DA ISSUE	06/09/2022
B	DA ISSUE	06/09/2022
B	DA ISSUE	06/09/2022
B	DA ISSUE	06/09/2022
B	DA ISSUE	06/09/2022



LEGEND

--- Site Boundary

01



LOOKING EAST TOWARD THE RESIDENTIAL BOUNDARY AND GLIMPSES OF THE LAKE TO THE SOUTH-EAST.

02



LOOKING SOUTH TOWARD THE LAKE FROM THE FRONT OF THE SITE.

03



LOOKING NORTH-WEST TOWARD THE ENTRANCE TO THE SITE.

LOT 3 LAKEWOOD DRIVE, MERIMBULA

LOT 602/ DP1277714

LAND ZONING: C2 ENVIRONMENTAL CONSERVATION

LAND ZONING: R3 MEDIUM DENSITY RESIDENTIAL

LAND ZONING: C3 ENVIRONMENTAL MANAGEMENT

PROPOSAL

The project proposes to develop a Senior’s Living development. The landscape documentation attached is in support of the Development Application. The landscape proposal comprises of deep soil planting and planters on the ground level and planting areas on level one.

THE SITE

The project site (‘the site’), consists of an irregular shaped lot, which is accessed by Lakewood Drive in Merimbula. Topographically the site falls from the highest point on it’s southern boundary and falls very steeply on the rear third portion, down to a creekline which runs along the northern boundary. The majority of the existing vegetation is situated through this northern riparian portion, and is proposed to be retained. An Asset Protection Zone has been established for the 140m from the northern boundary (Refer Bush Fire Report for details). The site affords expansive views to the south towards the lake. Robyn’s Nest Resort adjoins the site to the west and residential dwellings adjoin the site to the east. Screening along these boundaries will need to be considered in the landscape approach for this project.

PROPOSED LANDSCAPE APPROACH

Proposed landscape areas include planting on the ground plane (which will include deep soil planting) and also on Level One. These areas provide the opportunity to provide vegetation which will assist in visually softening the bulk and scale of the development and improve the greening outcome for the development.

The existing site characteristics have been considered to form a proposal which aims to create an attractive, functional and aesthetically pleasing landscape. The following general principles include:

- Utilise a planting palette of proven performing plants; chosen for being suited to the local climatic conditions. The proposed species are hardy, whilst also easily managed and maintained.
- Incorporate a diverse planting palette that utilises several species for each application, to ensure seasonal variation and allow for a consistent level of amenity in the instance one species under-performs.
- The combination of species have been chosen for their bold and interesting texture, form and colour; which provide a high quality amenity for the residents.
- Provide sufficient soil depths within the constraints of the site to ensure a healthy, productive and verdant landscape.
- Provision of screen planting, particularly on the boundaries adjoining existing residential properties, to assist in visually reducing the bulk and scale of the development.
- Be robust, suited to the available aspect, work with ambient wind and light levels and minimise maintenance and water use.
- Proposed landscaping around the development site is to achieve the principles listed in Appendix 4 of *Planning for Bush Fire Protection 2019*.

PLANTING SPECIFICATION

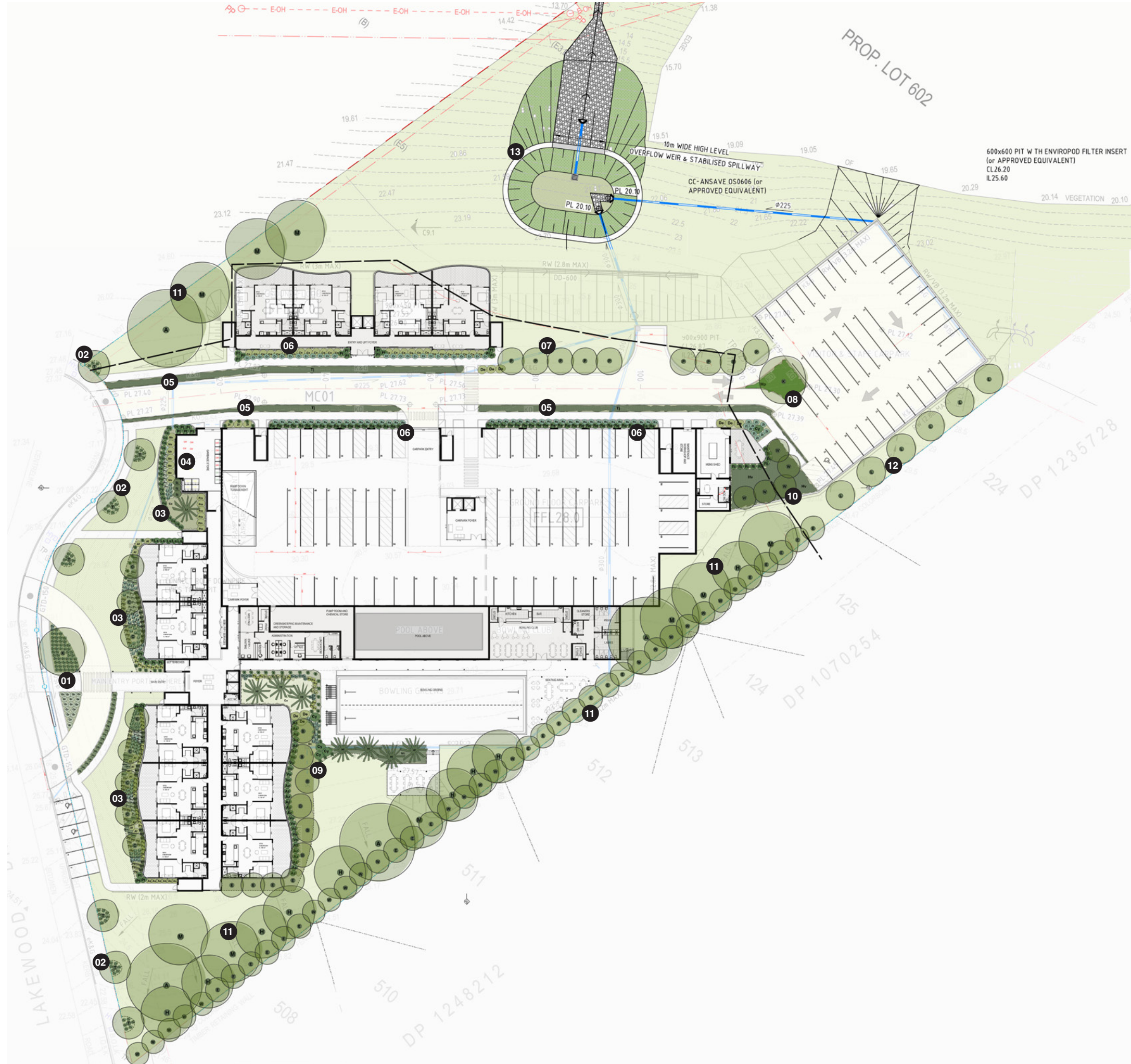
- Planter areas around the perimeter of the buildings on the Ground Floor and also on the upper Level One area shall have a minimum soil depth of 0.8m to support the growth of the plant species selected.
- Soil is to be a quality garden soil mix.
- Supply and install 75mm of hardwood horticultural grade mulch to the planting bed area, set down 25mm from the top of the planter edge.
- Plants shall be vigorous, well established, of good form consistent with the species or variety, not soft of forced and free of disease and insect pests. Roots shall be large, healthy root systems with no evidence of having been restricted on growth or damaged. Root system shall be well balanced in relation to the size of the plant.

MAINTENANCE

This proposal attempts to provide verdant planted areas with the need to ensure that these plantings have longevity within a low-maintenance environment. For this reason the landscape approach seeks to use a robust palette of proven performing plants chosen for being suited to the local climatic conditions, tolerant of low water conditions and ambient light levels.

Ongoing maintenance schedule:

1. All landscape areas to be hand watered once a week during summer and every three weeks during winter.
2. Remove any dead, broken or spent parts of plants.
3. Regular fertilising of all raised planter areas to achieve a healthy and vigorous growth. Organic slow release fertiliser to be used in all raised planters.
4. Check for infestations and plant diseases.
5. Check surface drain inlets in landscaped areas for plant debris.
6. Spill over plants in all perimeter planters will need to be strategically maintained.

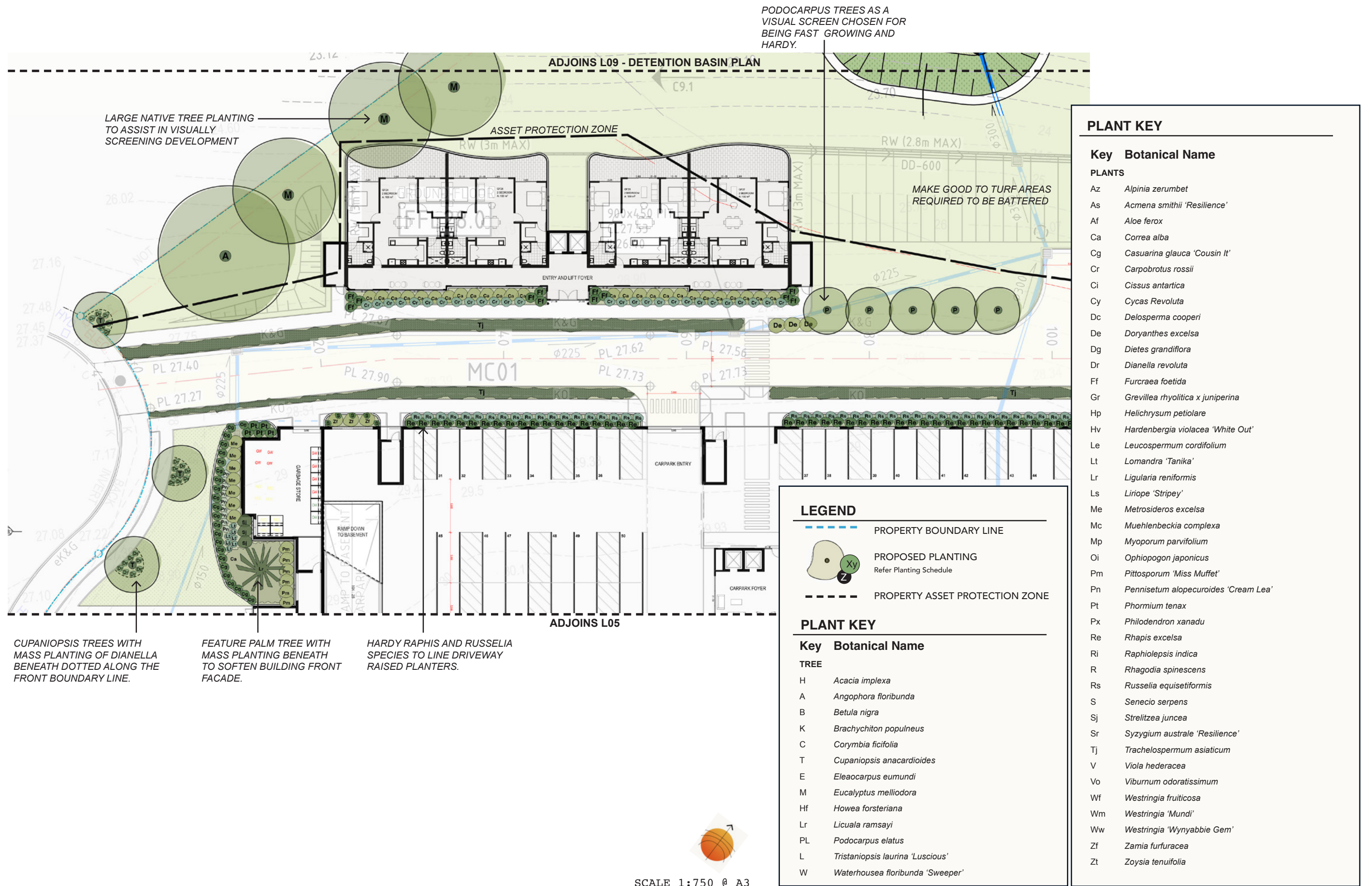


LEGEND

- PROPERTY BOUNDARY LINE
 - PROPOSED PLANTING
Refer Planting Schedule
 - PROPERTY ASSET PROTECTION ZONE
- LARGE SPECIMEN TREE (refer Plant Schedule) proposed as a focal point, with mass planting beneath.
 - TREES to line the front boundary. *Tristanopsis* 'Luscious' with *Dianella* sp. mass planted beneath.
 - MASS PLANTED front garden beds to be a mix of suitable trees and shrubs, which will provide year round interest.
 - GREEN WALL to be mass planted with a suitable selection of species suited to the local climatic conditions and vertical application. Wall to soften the building frontage.
 - GROUND COVERS to be mass planted along driveway entrance. Refer Plant Schedule.
 - ENTRANCE GARDENS to be soften the driveway entrance. Refer Plant Schedule.
 - SCREEN TREES (Illawarra Plum) to line the north-western drive and provide a screen to the detention basin area.
 - LARGE SPECIMEN TREE with mass planting to provide amenity to the car park area.
 - NORTHERN PLANTING bed to be mass planted with a mix of screen trees and palms, chosen for their interesting form and visual diversity. Mass planting beneath of hardy, low maintenance species.
 - SCREEN PLANTING to the northern planting bed, including *Waterhousea* sp.
 - PROPOSED BUFFER PLANTING along the residential boundaries, a mix of natives at varying sizes and forms to be staggered to simulate a natural setting aimed at visually screening the building.
 - CAR PARK tree planting to be suitably spaced to ensure a discontinuous gap between the canopies within the APZ.
 - DETENTION BASIN to be planted with suitable plant species.



SCALE 1:1500 @ A3





PLANT KEY	
Key	Botanical Name
PLANTS	
Az	Alpinia zerumbet
As	Acmena smithii 'Resilience'
Af	Aloe ferox
Ca	Correa alba
Cg	Casuarina glauca 'Cousin It'
Cr	Carpobrotus rossii
Ci	Cissus antarctica
Cy	Cycas Revoluta
Dc	Delosperma cooperi
De	Doryanthes excelsa
Dg	Diets grandiflora
Dr	Dianella revoluta
Ff	Furcraea foetida
Gr	Grevillea rhyolitica x juniperina
Hp	Helichrysum petiolare
Hv	Hardenbergia violacea 'White Out'
Le	Leucospermum cordifolium
Lt	Lomandra 'Tanika'
Lr	Ligularia reniformis
Ls	Liriope 'Stripe'
Me	Metrosideros excelsa
Mc	Muehlenbeckia complexa
Mp	Myoporum parvifolium
Oi	Ophiopogon japonicus
Pm	Pittosporum 'Miss Muffet'
Pn	Pennisetum alopecuroides 'Cream Lea'
Pt	Phormium tenax
Px	Philodendron xanadu
Re	Rhapis excelsa
Ri	Raphiolepis indica
R	Rhagodia spinescens
Rs	Russelia equisetiformis
S	Senecio serpens
Sj	Strelitzia juncea
Sr	Syzygium australe 'Resilience'
Tj	Trachelospermum asiaticum
V	Viola hederacea
Vo	Viburnum odoratissimum
Wf	Westringia fruticosa
Wm	Westringia 'Mundi'
Ww	Westringia 'Wynabbie Gem'
Zf	Zamia furfuracea
Zt	Zoysia tenuifolia

LEGEND

PROPERTY BOUNDARY LINE

PROPOSED PLANTING
Refer Planting Schedule

PROPERTY ASSET PROTECTION ZONE

PLANT KEY

Key	Botanical Name
TREE	
H	Acacia implexa
A	Angophora floribunda
B	Betula nigra
K	Brachychiton populneus
C	Corymbia ficifolia
T	Cupaniopsis anacardioides
E	Eleaocarpus eumundi
M	Eucalyptus melliodora
Hf	Howea forsteriana
Lr	Licuala ramsayi
PL	Podocarpus elatus
L	Tristanopsis laurina 'Luscious'
W	Waterhousea floribunda 'Sweeper'



PLANT KEY

Key Botanical Name

PLANTS

Az	<i>Alpinia zerumbet</i>
As	<i>Acmena smithii</i> 'Resilience'
Af	<i>Aloe ferox</i>
Ca	<i>Correa alba</i>
Cg	<i>Casuarina glauca</i> 'Cousin It'
Cr	<i>Carpobrotus rossii</i>
Ci	<i>Cissus antartica</i>
Cy	<i>Cycas Revoluta</i>
Dc	<i>Delosperma cooperi</i>
De	<i>Doryanthes excelsa</i>
Dg	<i>Dietes grandiflora</i>
Dr	<i>Dianella revoluta</i>
Ff	<i>Furcraea foetida</i>
Gr	<i>Grevillea rhyolitica</i> x <i>juniperina</i>
Hp	<i>Helichrysum petiolare</i>
Hv	<i>Hardenbergia violacea</i> 'White Out'
Le	<i>Leucospermum cordifolium</i>
Lt	<i>Lomandra</i> 'Tanika'
Lr	<i>Ligularia reniformis</i>
Ls	<i>Liriope</i> 'Stripey'
Me	<i>Metrosideros excelsa</i>
Mc	<i>Muehlenbeckia complexa</i>
Mp	<i>Myoporum parvifolium</i>
Oi	<i>Ophiopogon japonicus</i>
Pm	<i>Pittosporum</i> 'Miss Muffet'
Pn	<i>Pennisetum alopecuroides</i> 'Cream Lea'
Pt	<i>Phormium tenax</i>
Px	<i>Philodendron xanadu</i>
Re	<i>Rhapis excelsa</i>
Ri	<i>Raphiolepis indica</i>
R	<i>Rhagodia spinescens</i>
Rs	<i>Russelia equisetiformis</i>
S	<i>Senecio serpens</i>
Sj	<i>Strelitzia juncea</i>
Sr	<i>Syzygium australe</i> 'Resilience'
Tj	<i>Trachelospermum asiaticum</i>
V	<i>Viola hederacea</i>
Vo	<i>Viburnum odoratissimum</i>
Wf	<i>Westringia fruticosa</i>
Wm	<i>Westringia</i> 'Mundi'
Ww	<i>Westringia</i> 'Wynabbie Gem'
Zf	<i>Zamia furfuracea</i>
Zt	<i>Zoysia tenuifolia</i>

LEGEND

- PROPERTY BOUNDARY LINE
- PROPOSED PLANTING
Refer Planting Schedule
- PROPERTY ASSET PROTECTION ZONE

PLANT KEY

Key Botanical Name

TREE

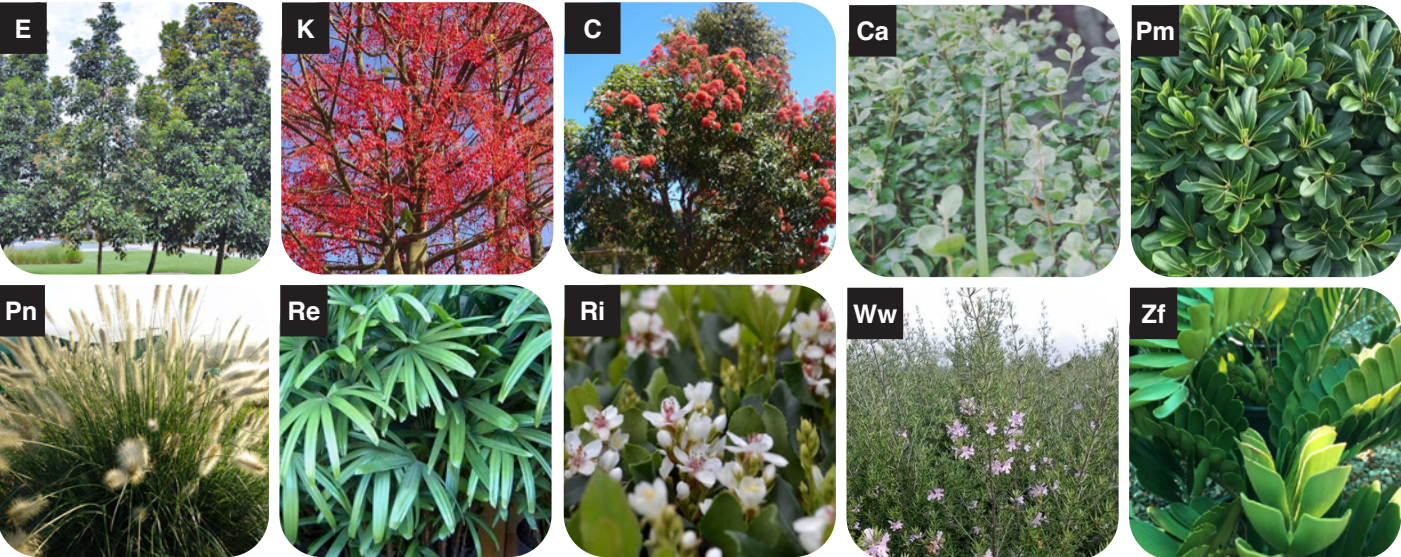
H	<i>Acacia implexa</i>
A	<i>Angophora floribunda</i>
B	<i>Betula nigra</i>
K	<i>Brachychiton populneus</i>
C	<i>Corymbia ficifolia</i>
T	<i>Cupaniopsis anacardioides</i>
E	<i>Eleaocarpus eumundi</i>
M	<i>Eucalyptus melliodora</i>
Hf	<i>Howea forsteriana</i>
Lr	<i>Licuala ramsayi</i>
PL	<i>Podocarpus elatus</i>
L	<i>Tristanopsis laurina</i> 'Luscious'
W	<i>Waterhousea floribunda</i> 'Sweeper'

SCALE 1:750 @ A3

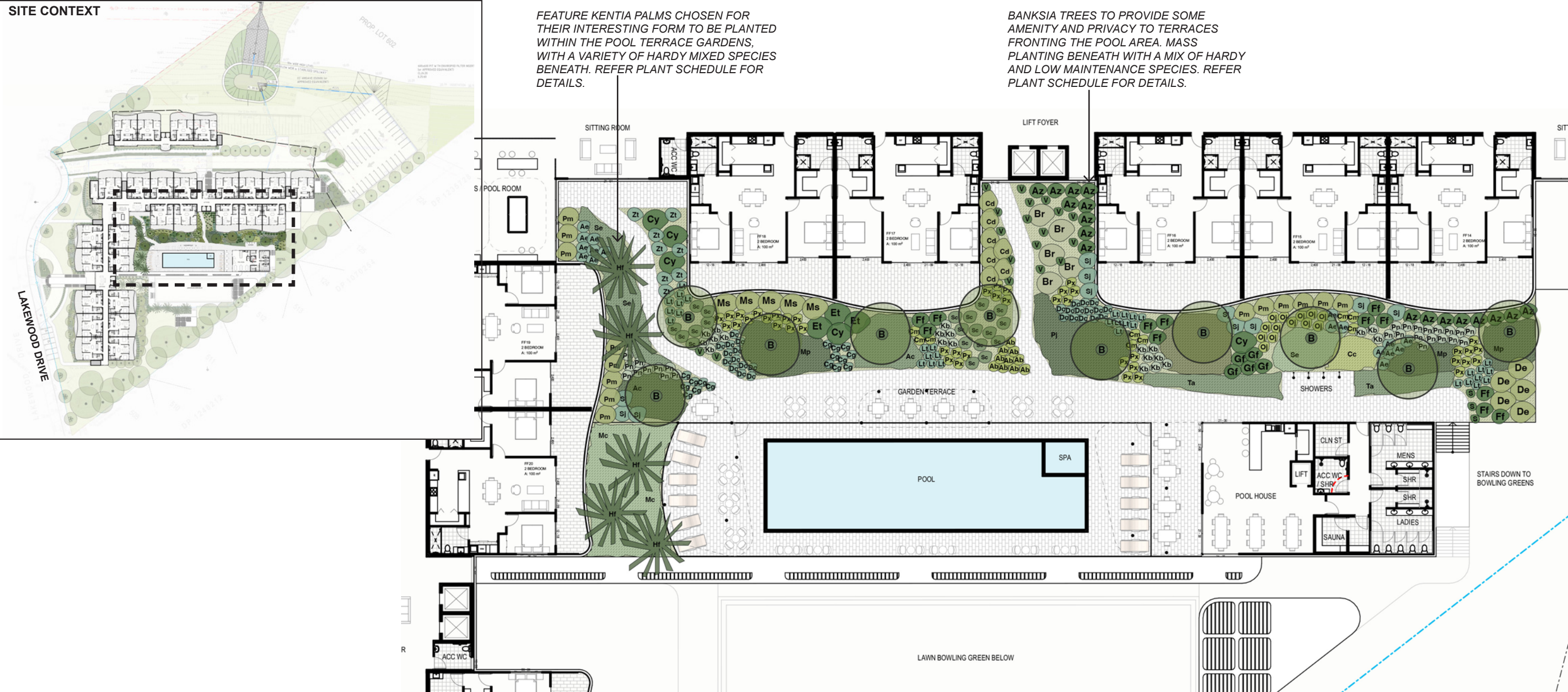
PLANT SCHEDULE

Key	Botanical Name	Common Name	Pot Size	Mature Height	Mature Width
TREE					
H	<i>Acacia implexa</i>	Hickory Wattle	45L	10m	6m
A	<i>Angophora floribunda</i>	Rough barked Apple	45L	15m	10m
B	<i>Betula nigra</i>	Birch	45L	10m	6m
K	<i>Brachychiton populneus</i>	Kurrajong	45L	20m	8m
C	<i>Corymbia ficifolia</i>	Dwarf Flowering Gum	45L	6m	3m
T	<i>Cupaniopsis anacardioides</i>	Tuckeroo	45L	8m	5m
E	<i>Eleaocarpus eumundi</i>	Quandong Tree	45L	7m	2m
M	<i>Eucalyptus melliodora</i>	Yellow Box	45L	15m	10m
Hf	<i>Howea forsteriana</i>	Kentia Palm	45L	15m	4m
Lr	<i>Licuala ramsayi</i>	Australian Fan Palm	45L	15m	5m
PL	<i>Podocarpus elatus</i>	Illawarra Plum Tree	45L	12m	7m
L	<i>Tristaniopsis laurina</i> 'Luscious'	Luscious	45L	12m	5m
W	<i>Waterhousea floribunda</i> 'Sweeper'	Sweeper	45L	8m	5m

PLANT IMAGES



Key	Botanical Name	Common Name	Pot Size	Mature Height	Mature Width
PLANTS					
Az	<i>Alpinia zerumbet</i>	Green Shell Ginger	140mm	2.5m	1.2m
As	<i>Acmena smithii</i> 'Resilience'	Resilience	140mm	2.0m	1.5m
Af	<i>Aloe ferox</i>	Aloe	140mm	2.0m	2.0m
Ca	<i>Correa alba</i>	White Correa	140mm	1.5m	1.5m
Cg	<i>Casuarina glauca</i> 'Cousin It'	Cousin It	140mm	0.1m	1.0m
Cr	<i>Carpobrotus rossii</i>	Pigface	140mm	0.1m	1.0m
Ci	<i>Cissus antartica</i>	Kangaroo Vine	140mm	0.2m	1.0m
Cy	<i>Cycas Revoluta</i>	Sago Palm	140mm	2.0m	2.0m
Dc	<i>Delosperma cooperi</i>	Ice Plant	140mm	0.1m	0.6m
De	<i>Doryanthes excelsa</i>	Gynea Lily	140mm	1.5m	1.5m
Dg	<i>Dietes grandiflora</i>	Wild Iris	140mm	1.2m	1.2m
Dr	<i>Dianella revoluta</i>	Flax Lily	140mm	0.8m	0.8m
Ff	<i>Furcraea foetida</i>	Mauritius Hemp	140mm	2.0m	2.0m
Gr	<i>Grevillea rhyolitica</i> x <i>juniperina</i>	Cherry Cluster	140mm	0.3m	1.0m
Hp	<i>Helichrysum petiolare</i>	Licorice Plant	140mm	0.5m	1.5m
Hv	<i>Hardenbergia violacea</i> 'White Out'	False Sarsparilla	140mm	0.4m	2.0m
Le	<i>Leucospermum cordifolium</i>	Pin-cushion	140mm	1.5m	1.5m
Lt	<i>Lomandra</i> 'Tanika'	Tanika	140mm	0.8m	0.8m
Lr	<i>Ligularia reniformis</i>	Tractor Plant	140mm	0.7m	0.7m
Ls	<i>Liriope</i> 'Stripey'	Stripey White	140mm	0.5m	0.5m
Me	<i>Metrosideros excelsa</i>	Dwarf NZ Christmas Bush	140mm	2.0m	1.0m
Mc	<i>Muehlenbeckia complexa</i>	Maidenhair Vine	140mm	0.2m	2.0m
Mp	<i>Myoporum parvifolium</i>	Creeping Boobialla	140mm	0.2m	1.0m
Oi	<i>Ophiopogon japonicus</i>	Giant Mondo Grass	140mm	0.2m	0.2m
Pm	<i>Pittosporum</i> 'Miss Muffet'	Miss Muffet	140mm	1.2m	1.2m
Pn	<i>Pennisetum alopecuroides</i> 'Cream Lea'	Fountain Grass	140mm	0.7m	0.7m
Pt	<i>Phormium tenax</i>	New Zealand Flax	140mm	1.5m	1.5m
Px	<i>Philodendron xanadu</i>	Xanadu	140mm	0.9m	0.9m
Re	<i>Rhapis excelsa</i>	Lady Pam	140mm	1.5m	1.5m
Ri	<i>Raphiolepis indica</i>	Indian Hawthorn	140mm	2-4m	1.5m
R	<i>Rhagodia spinescens</i>	Saltbush	140mm	0.5m	1.0m
Rs	<i>Russelia equisetiformis</i>	Fountain Plant	140mm	1.2m	1.2m
S	<i>Senecio serpens</i>	Blue Chalksticks	140mm	0.2m	1.0m
Sj	<i>Strelitzia juncea</i>	Rush Leaf Bird of Paradise	140mm	1.2m	1.0m
Sr	<i>Syzygium australe</i> 'Resilience'	Lily Pily	140mm	3-5m	2m
Tj	<i>Trachelospermum asiaticum</i>	Asiatic Jasmine	140mm	0.2m	1.0m
V	<i>Viola hederacea</i>	Native Violet	140mm	0.1m	0.5m
Vo	<i>Viburnum odoratissimum</i>	Sweet Viburnum	140mm	4.0m	2.0m
Wf	<i>Westringia fruiticosa</i>	Coastal Rosemary	140mm	2.5m	1.5m
Wm	<i>Westringia</i> 'Mundi'	Mundi	140mm	0.4m	0.1m
Ww	<i>Westringia</i> 'Wynyabbie Gem'	Coastal Rosemary	140mm	2m	2m
Zf	<i>Zamia furfuracea</i>	Cardboard Palm	140mm	1.0m	1.0m
Zt	<i>Zoysia tenuifolia</i>	Velvet Grass	140mm	0.1m	0.4m

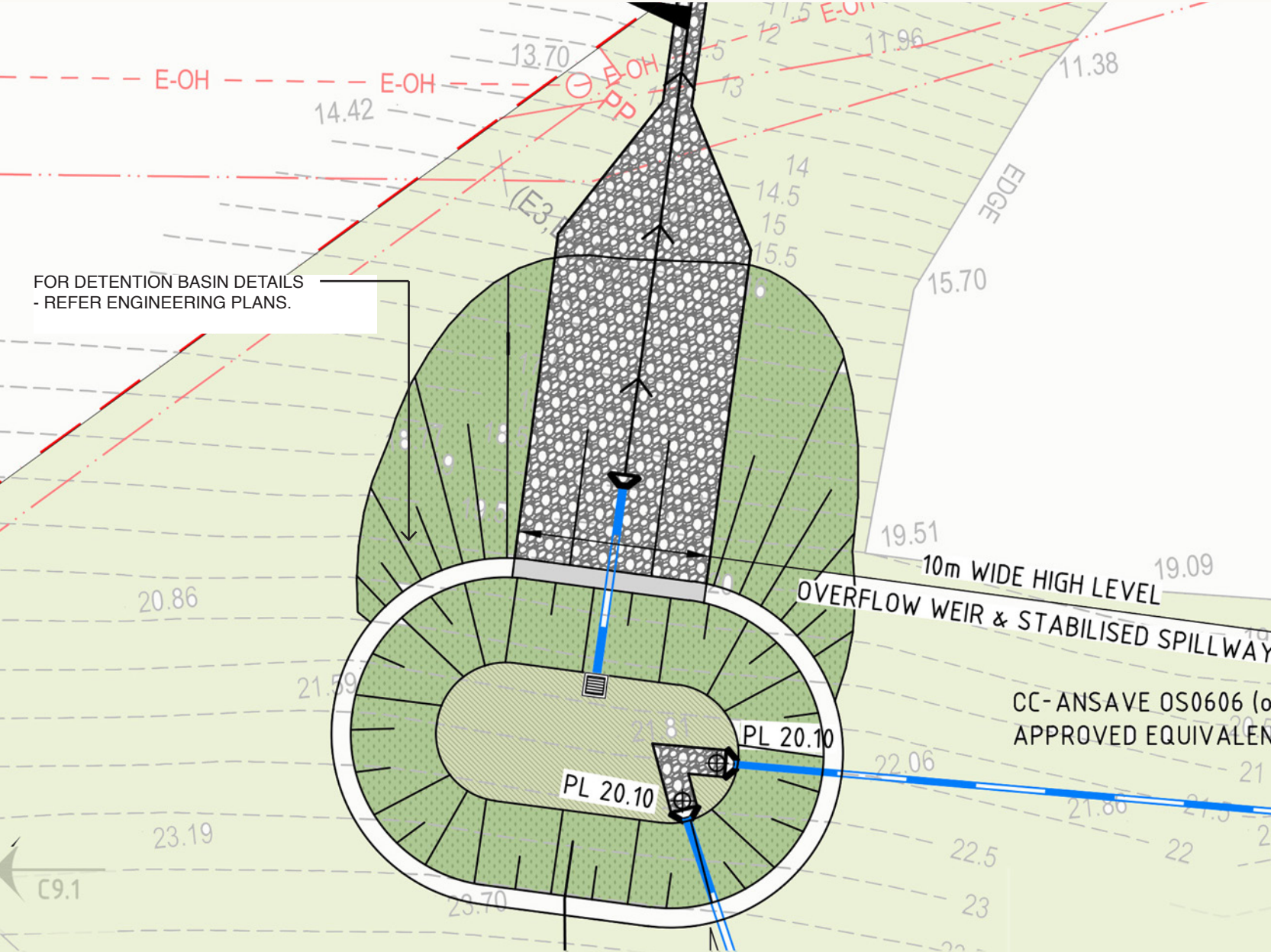


PLANT SCHEDULE

PLANT IMAGES

Key	Botanical Name	Common Name	Pot Size	Mature Height	Mature Width
TREE					
B	<i>Banksia integrifolia</i>	Coast Banksia	45L	6m	3m
Hf	<i>Howea forsteriana</i>	Kentia Palm	45L	15m	4m
PLANTS					
Ab	<i>Aloe 'Bush Baby Yellow'</i>	Bush Bay Yellow	140mm	0.4m	0.4m
Ac	<i>Aptenia cordifolia</i>	Desert Rose	140mm	0.1m	1.0m
Ae	<i>Aspidistra elatior</i>	Cast Iron Plant	140mm	1.2m	1.5m
Af	<i>Aloe 'Ferox'</i>	Bitter Aloe	140mm	1.0m	1.0m
Az	<i>Alpinia zerumbet</i>	Green Shell Ginger	140mm	2.5m	1.2m
Br	<i>Alcantarea imperialis rubra</i>	Giant Bromeliad	140mm	1.5m	1.5m
Cc	<i>Casuarina 'Cousin It'</i>	Cousin It	140mm	0.2m	1.0m
Cg	<i>Carpobrotus 'aussie Rambler'</i>	Aussie Rambler	140mm	0.3m	1.0m
Cd	<i>Cordyline australis</i>	Cabbage Tree	140mm	2.4m	1.5m
Cm	<i>Crassula ovata 'max cook'</i>	Max Cook	140mm	0.5m	0.5m
Cy	<i>Cycas Revoluta</i>	Sago Palm	140mm	2.0m	2.0m
Dc	<i>Dianella caerulea</i>	Blue Flax Lily	140mm	0.6m	0.6m
De	<i>Doryanthes excelsa</i>	GyMEA Lily	140mm	2..0m	2.0m
Et	<i>Euphorbia tirucalli</i>	Firesticks	140mm	2-3m	1.0m
Ff	<i>Furcraea foetida</i>	Mauritius Hemp	140mm	2.0m	2.0m
Hp	<i>Helichrysum petiolare</i>	Licorice Plant	140mm	0.3m	1.0m
Kb	<i>Kalanchoe hildebrandtii 'Silver Spoons'</i>	Silver Spoons	140mm	1.0m	1.0m
Lt	<i>Lomandra 'Lime Tuff'</i>	Lime Matt Grass	140mm	0.5m	0.5m
Mc	<i>Muehlenbeckia complexa</i>	Maidenhair Vine	140mm	0.3m	1.0m
Oi	<i>Ophiopogon japonicus</i>	Giant Mondo Grass	140mm	0.2m	0.2m
Pj	<i>Pandorea jasminoides</i>	Pandorea	140mm	0.3m	1.0m
Pm	<i>Pittosporum 'Miss Muffet'</i>	Miss Muffet	140mm	1.2m	1.2m
Pn	<i>Pennisetum alopecuroides 'Cream Lea'</i>	Fountain Grass	140mm	0.7m	0.7m
Px	<i>Philodendron xanadu</i>	Xanadu	140mm	0.7m	0.7m
Sc	<i>Senecio crassissimus</i>	Vertical Leaf Senecio	140mm	0.7m	0.5m
Sj	<i>Strelitzea juncea</i>	Rush Leaf Bird of Paradise	140mm	1.2m	1.0m
Ta	<i>Trachelospermum asiaticum</i>	Asiatic Jasmine	140mm	0.2m	1.0m
V	<i>Viola hederacea</i>	Native Violet	140mm	0.1m	0.5m
Zt	<i>Zoysia tenuifolia</i>	Velvet Grass	140mm	0.1m	0.4m





LEGEND

- LOT BOUNDARY
- MASS NATIVE GRASS PLANTING
REFER PLANT SCHEDULE AND DETAIL
- BIO-RETENTION PLANTING
- COUCH (HYDROSEED)
AS REQUIRED TO BATTERS

BIO-RETENTION PLANTING SCHEDULE

BOTANICAL NAME	COMMON NAME	POT SIZE	MATURE HEIGHT
<i>Baumea articulata</i>	Jointed Twig Rush	Tube	2.5m
<i>Baumea rubiginosa</i>	Twig Rush	Tube	2.5m
<i>Fimbristylis dichotoma</i>	Common Fringe Sedge	Tube	1.0m
<i>Lepironia articulata</i>	Grey Sedge	Tube	2.0m

SPECIFICATION: DENSITY PLANTING OF 4 PLANTS PER M2 MIX OF THE ABOVE SPECIES. PLANT IN SPECIES GROUPS OF 3-5.

NATIVE GRASS - PLANTING SCHEDULE

REFER SPECIFICATION FOR PLANTING DETAILS

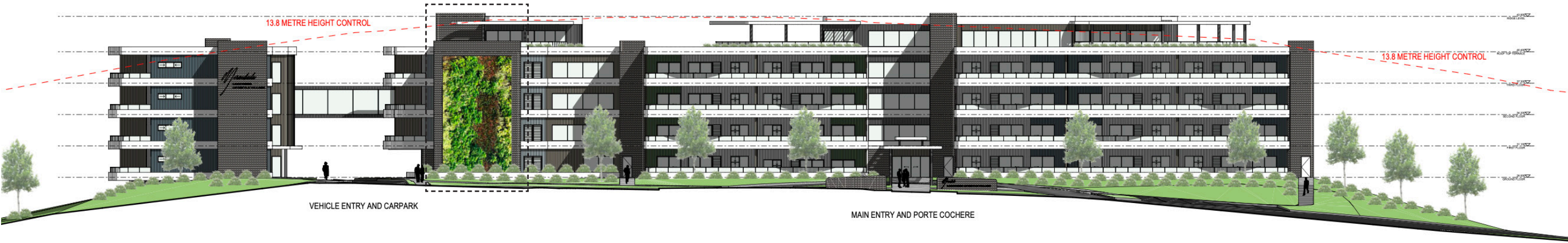
BOTANICAL NAME	COMMON NAME	POT SIZE
<i>Austrodanthonia fulva</i>	Wallaby Grass	Tubestock
<i>Dichelachne micranthe</i>	Plum Grass	Tubestock
<i>Echinopogon caespitosus</i>	Hedgehog Grass	Tubestock
<i>Poa labillardieri</i>	Tussock Grass	Tubestock
<i>Themeda australis</i>	Kangaroo Grass	Tubestock

SPECIFICATION: DENSITY PLANTING OF 6 PLANTS PER M2 MIX OF THE ABOVE SPECIES. PLANT IN SPECIES GROUPS OF 3-5.

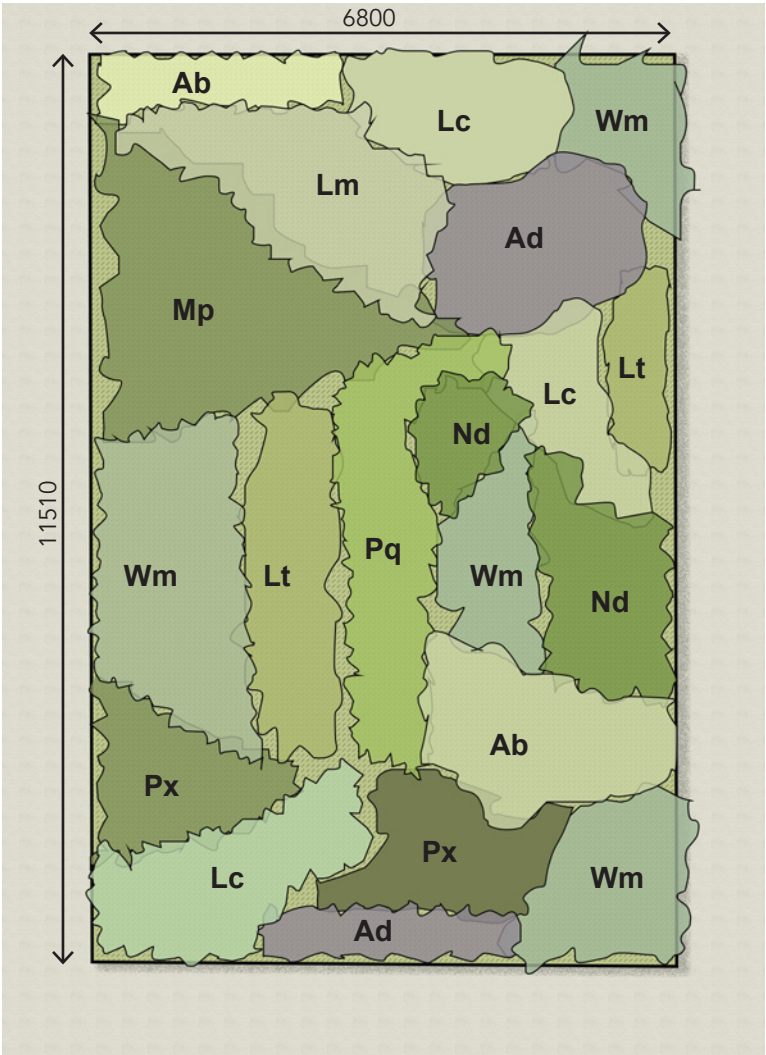
NATIVE PLANTING SPECIFICATION

- TUBESTOCK IS THE PREFERRED METHOD OF RE-VEGETATION, CARRIED OUT USING HAND TREE PLANTING TOOLS WITH THE FOLLOWING METHOD:
1. RAKE AWAY AREA TO EXPOSE SOIL;
 2. DIG HOLE AT LEAST TWICE SIZE OF POT;
 3. DISTURB THE SURROUNDING SUBSTRATE (UP TO 100MM) TO AVOID 'CLEAN' SIDES AND BASE OF HOLE;
 4. WHERE REQUIRED ADD A SLOW RELEASE FERTILISER AND WETTING AGENT TO THE BASE OF THE HOLE. COVER WITH EXISTING SOIL TO ENSURE THE PLANT ROOTS DO NOT COME IN DIRECT CONTACT WITH THE FERTILISER AND WETTING AGENT;
 5. PLACE THE PLANT IN THE HOLE SLIGHTLY BELOW SOIL LEVEL AND BACK-FILL THE HOLE;
 6. REPLACE MULCH AND MAINTAIN SPACE AROUND TRUNK SO IT IS KEPT CLEAR OF MULCH;
 7. ERECT 'GROW TUBE' AROUND EACH PLANT. REMOVE 'GROW TUBES' WHEN THE PLANTS ARE 1.5 TIMES THE HEIGHT OF THE 'GROW TUBE';
 8. WOODEN STAKES IDEALLY SHOULD BE PLACED NEXT TO ALL TREE AND LARGE SHRUB SPECIES, TO PREVENT INCIDENTAL DAMAGE TO PLANTS DURING MAINTENANCE ACTIVITIES. TREE GUARDS SHOULD BE PLACED OVER THE NEWLY PLANTED SEEDLINGS TO PROVIDE PROTECTION FROM GRAZING ANIMALS DURING THE PLANT ESTABLISHMENT PERIOD.
 9. WATER PLANTS THOROUGHLY WITHIN 1 HOUR OF PLANTING.
 10. SPRING IS THE PREFERRED TIME FOR PLANTING TO ALLOW FOR STRONG ESTABLISHMENT OF THE ROOT STRUCTURE AND PROMOTE GOOD PLANT GROWTH.

ARCHITECTURAL ELEVATION



PLANT LAYOUT



LANDSCAPE APPROACH

- 1. PLANTING SYSTEM SUBJECT TO DETAILED DESIGN - FYTO GREEN OR EQUIVALENT.
- 2. SPECIES CHOSEN FOR THEIR SUITABILITY TO THIS APPLICATION AND THE LOCAL CLIMATIC CONDITIONS.
- 3. A MIX OF SPECIES HAS BEEN CHOSEN IN THE INSTANCE ONE UNDER PERFORMS.

PLANT SCHEDULE

Key	Botanical Name	Common Name	Mature Height	Mature Width
PLANTS				
Ab	<i>Aloe 'Bush Baby Yellow'</i>	Bush Baby Yellow	0.4m	0.4m
Ad	<i>Alternanthera dentata 'Little Ruby'</i>	Little Ruby	0.4m	0.6m
Lm	<i>Liriope muscari</i>	Isabella	0.5m	0.5m
Lc	<i>Lomandra hystrix 'Cascade'</i>	Cascade	0.6m	0.6m
Lt	<i>Lomandra 'Tanika'</i>	Tanika	0.7m	0.7m
Px	<i>Philodendron xanadu</i>	Xanadu	0.7m	0.7m
Mp	<i>Myoporum parvifolium 'Yareena'</i>	Yareena	0.2m	1.0m
Nd	<i>Nandina domestica 'Blush'</i>	Sacred Bamboo	0.7m	0.7m
Pq	<i>Parthenocissus quinquefolia</i>	Virginia Creeper	0.2m	1.0m
Wm	<i>Westringia fruticosa 'Mundi'</i>	Coastal Rosemary	0.5m	0.7m

PLANT IMAGES

